

AzuRe264



Descrição: Azulejo do século XVIII (1700-1720); Origem: Lisboa.

Amostras: Fragmentos e uma secção semi-polida em depósito no *Museu Nacional do Azulejo* em Lisboa.

Índice

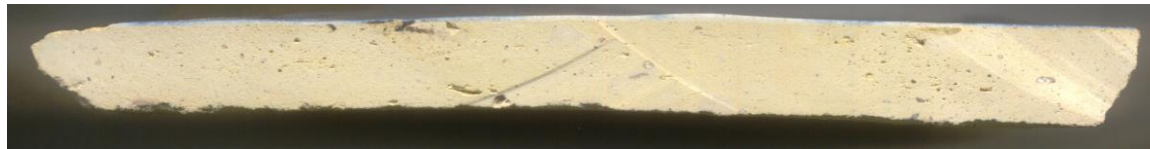
- **Caracterização Morfológica**
 - ✓ Imagens macroscópicas
 - ✓ Imagens de microscopia electrónica (SEM)
- **Caracterização Química/Mineralógica**
 - ✓ Análise por SEM/EDS
 - ✓ Análise por XRF

AzuRe264





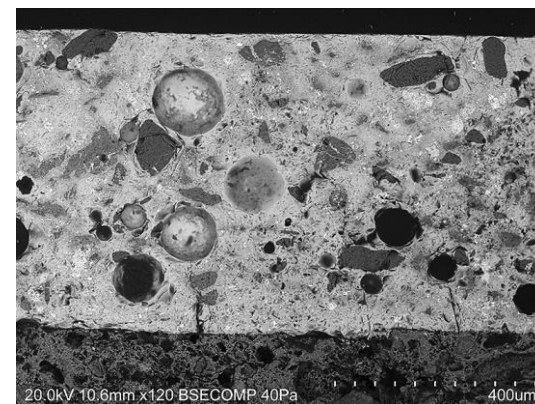
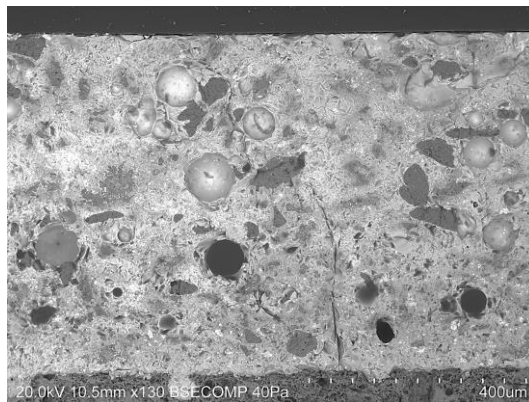
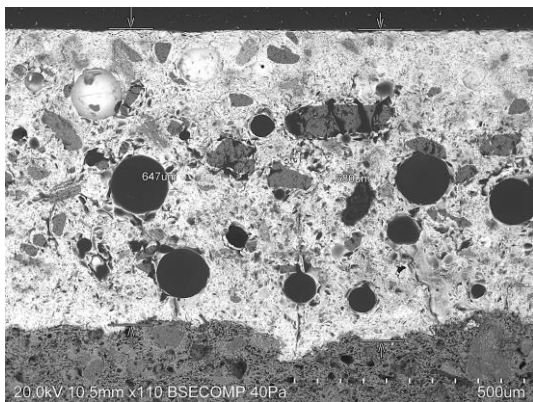
Azulejo com a superfície vidrada em bom estado de conservação.



- Espessura do Azulejo = 13 mm

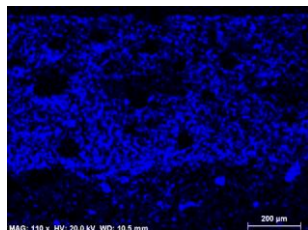
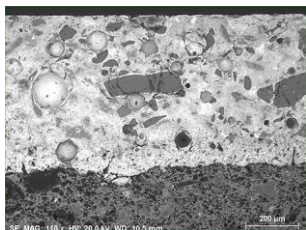


Chacota bege clara compacta com grandes poros alongados e circulares; vazios alongados; inclusões.

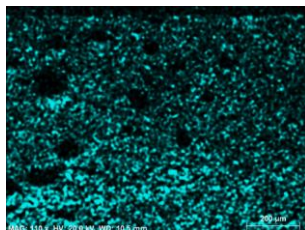


- Observa-se craquelé.
- Espessura do Vidrado = 647-680 µm

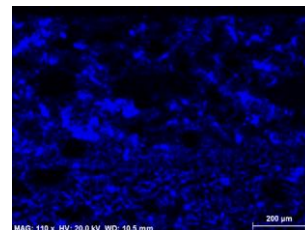
Equipamento: Microscópio eletrónico de varrimento HITACHI 3700N acoplado a um espectrómetro de energia dispersiva de raios-X Bruker Xflash 5010.



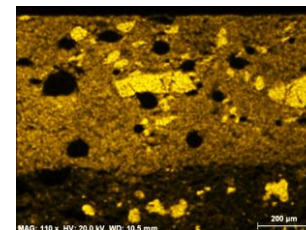
Na



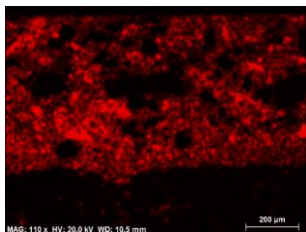
Mg



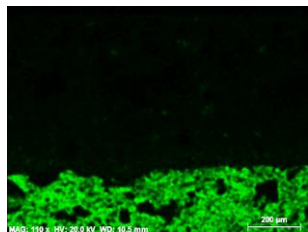
Al



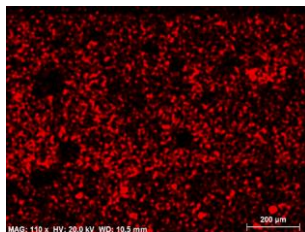
Si



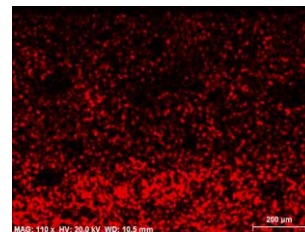
K



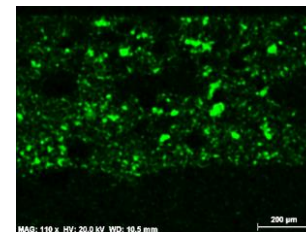
Ca



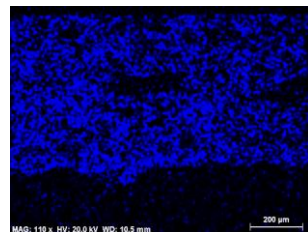
Ti



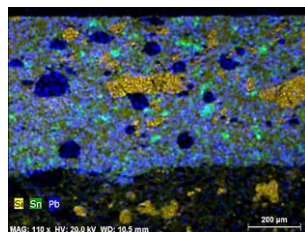
Fe



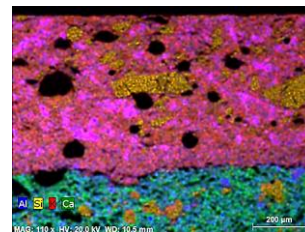
Sn



Pb



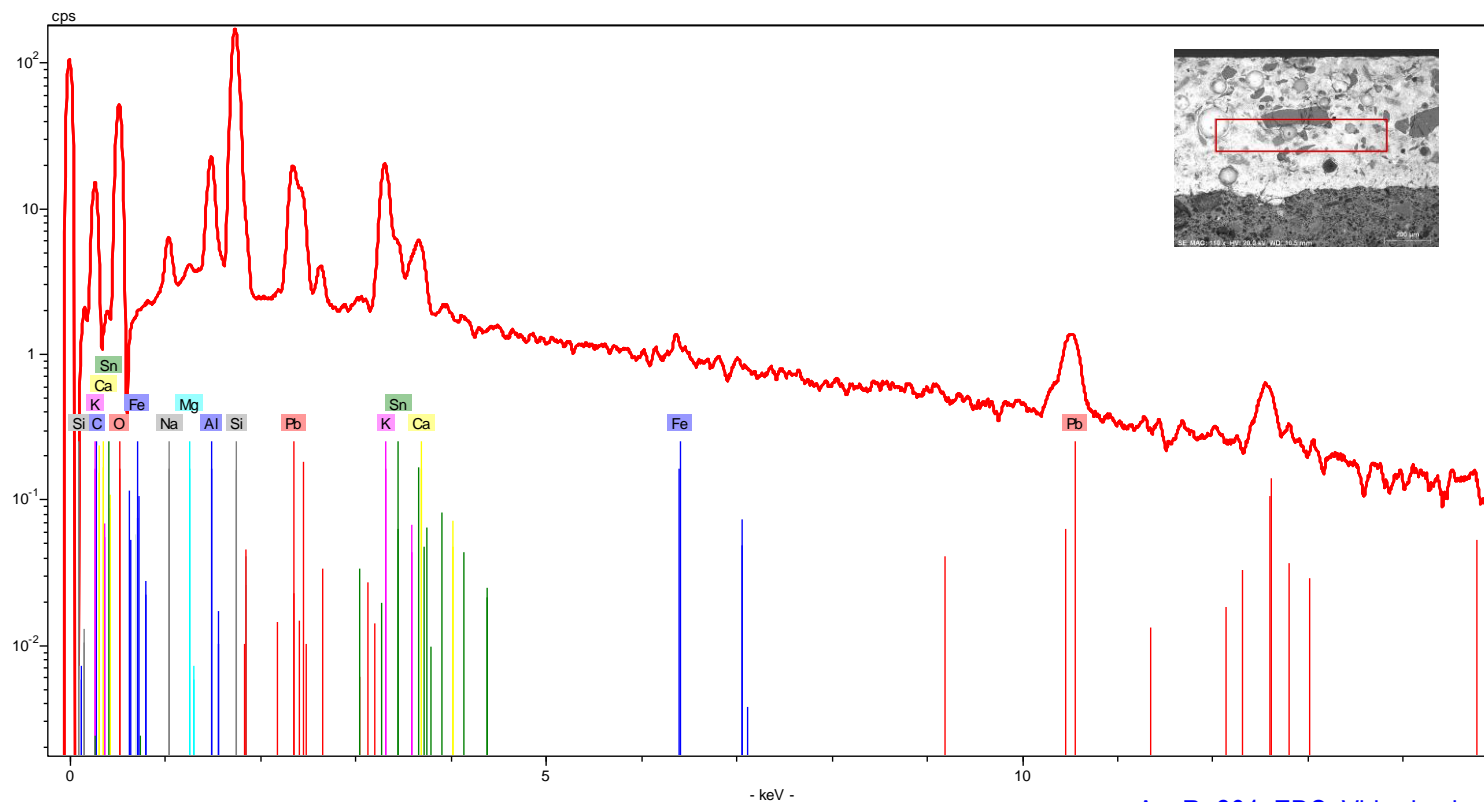
Combinação
Si_Sn_Pb



Combinação
Al_Si_K_Ca

Equipamento: Microscópio eletrônico de varrimento HITACHI 3700N acoplado a um espectrómetro de energia dispersiva de raios-X Bruker Xflash 5010.

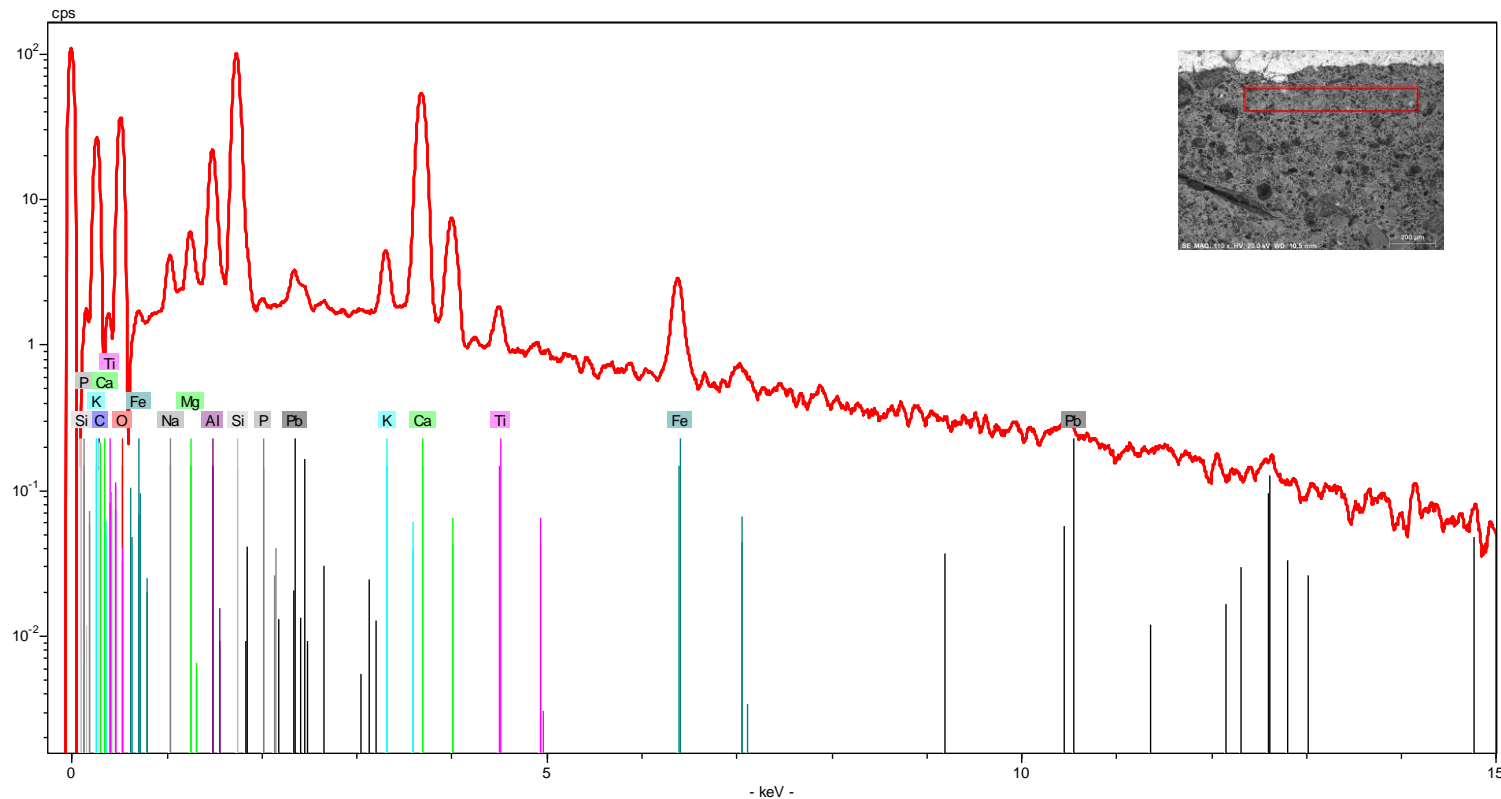
VIDRADO BRANCO



[AzuRe264 EDS Vidrado.xls](#)

Equipamento: Microscópio eletrónico de varrimento HITACHI 3700N acoplado a um espectrómetro de energia dispersiva de raios-X Bruker Xflash 5010.

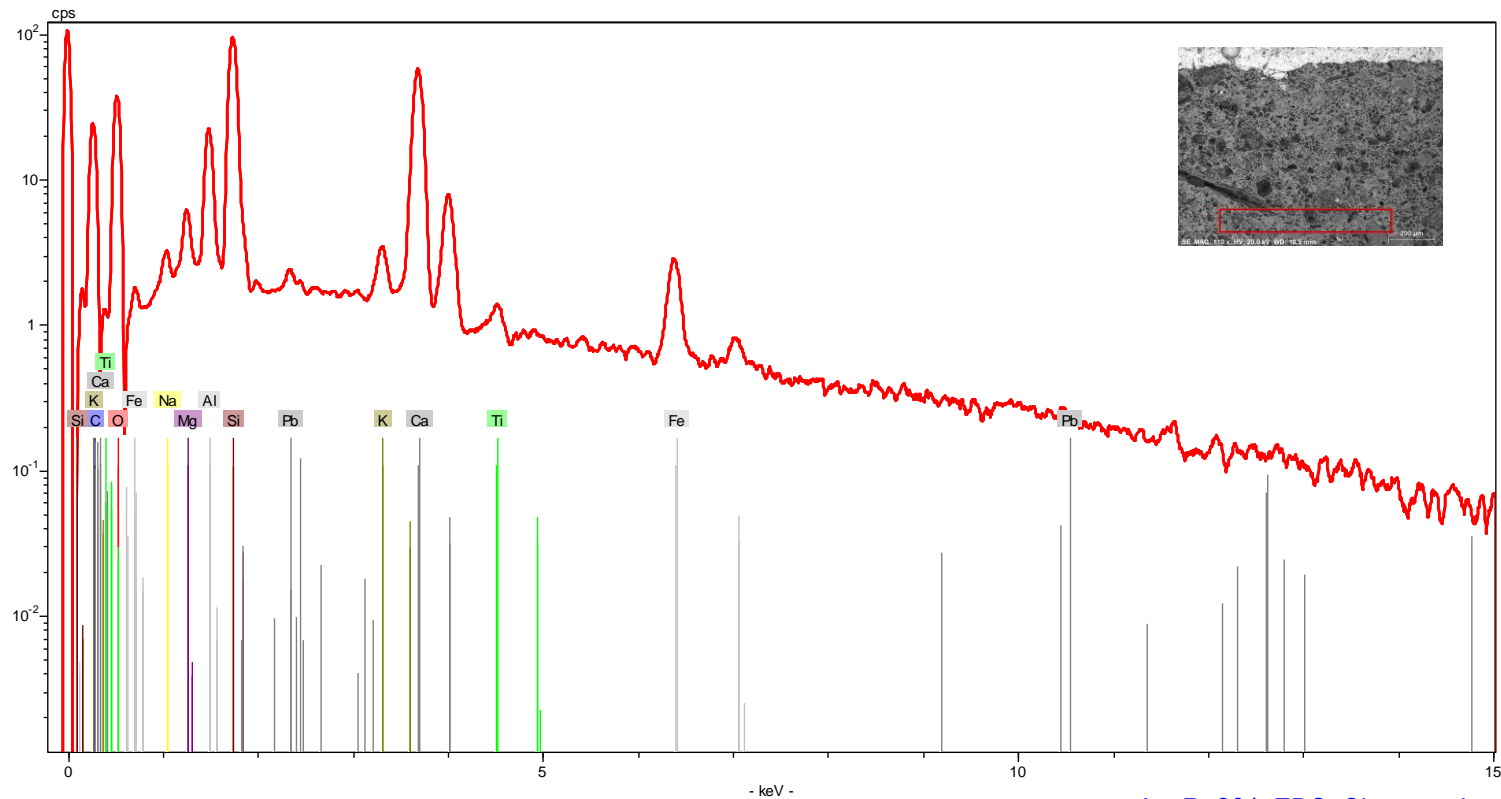
INTERFACE



[AzuRe264 EDS Interface.xls](#)

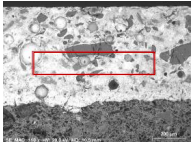
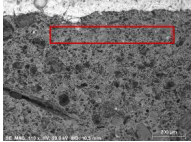
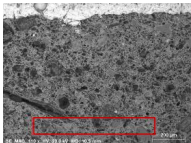
Equipamento: Microscópio eletrónico de varrimento HITACHI 3700N acoplado a um espectrómetro de energia dispersiva de raios-X Bruker Xflash 5010.

CHACOTA

[AzuRe264 EDS Chacota.xls](#)

Equipamento: Microscópio eletrónico de varrimento HITACHI 3700N acoplado a um espectrómetro de energia dispersiva de raios-X Bruker Xflash 5010.

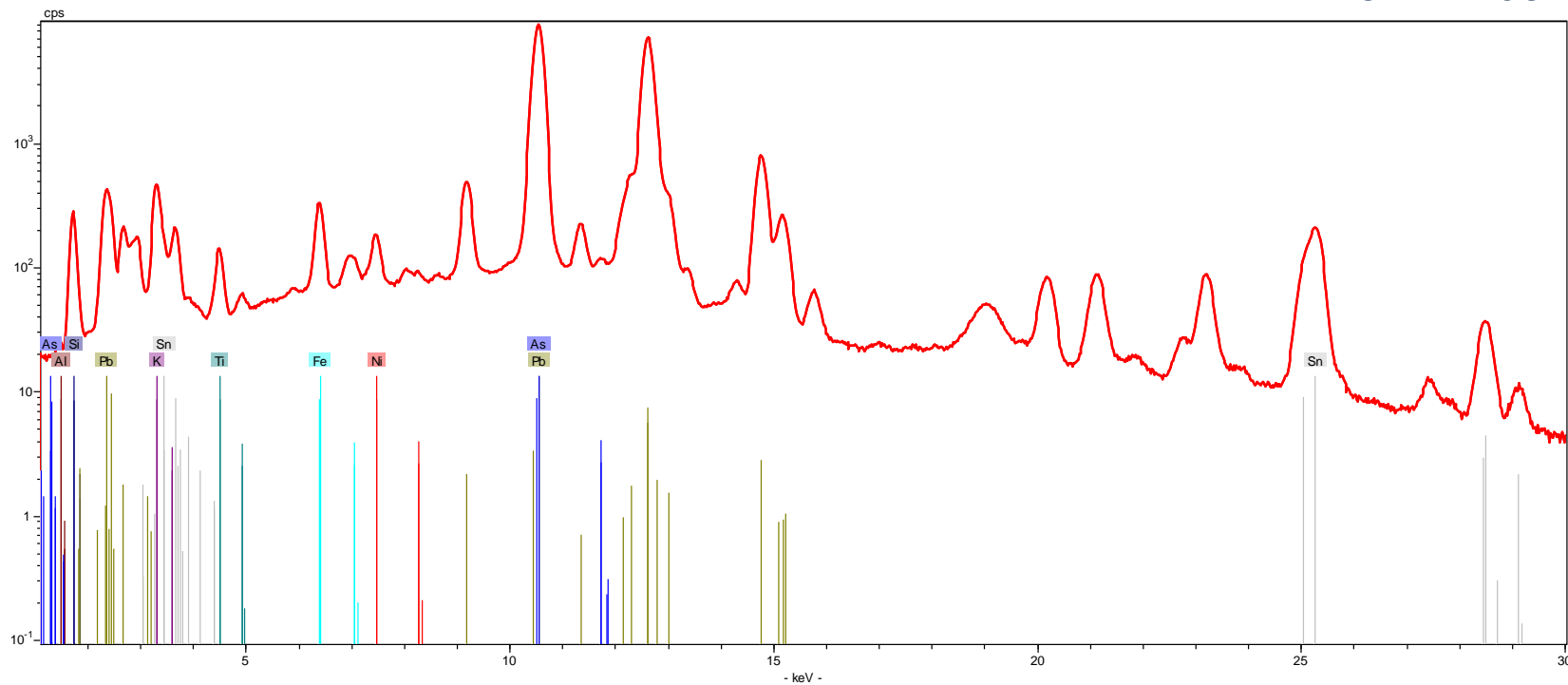
Composição química (% m/m)*

Área Analisada	Na	Mg	Al	Si	P	K	Ca	Ti	Fe	Sn	Pb
 vidrado branco	1,85	0,37	5,87	43,46	--	11,35	1,64	--	0,57	6,50	28,00
 chacota (próximo interface)	1,58	1,85	8,01	34,60	0,23	2,13	43,32	1,19	4,63	--	2,46
 chacota	1,07	1,96	8,37	33,71	--	1,59	46,62	0,68	4,94	--	1,05

* - Os valores apresentados na tabela correspondem às percentagens mássicas dos elementos detetados na amostra, não considerando o teor de oxigénio e normalizados a 100% ([ver aviso](#)).

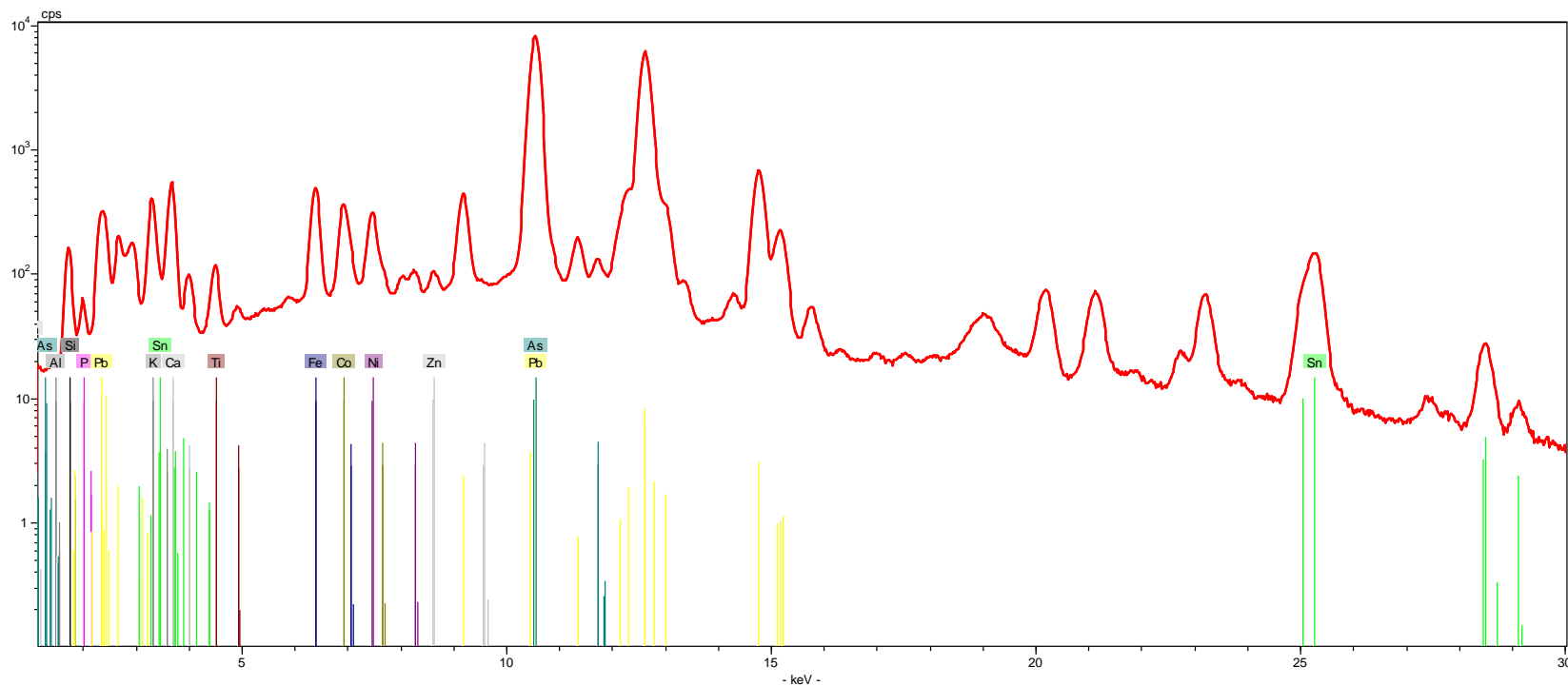
Equipamento: Microscópio eletrónico de varrimento HITACHI 3700N acoplado a um espectrómetro de energia dispersiva de raios-X Bruker Xflash 5010.

VIDRADO BRANCO

[AzuRe264 Branco.csv](#)

Equipamento: Espectrómetro portátil por fluorescência de raios-X Bruker Tracer III-SD.

VIDRADO AZUL

[AzuRe264 Azul.csv](#)

Equipamento: Espectrómetro portátil por fluorescência de raios-X Bruker Tracer III-SD.